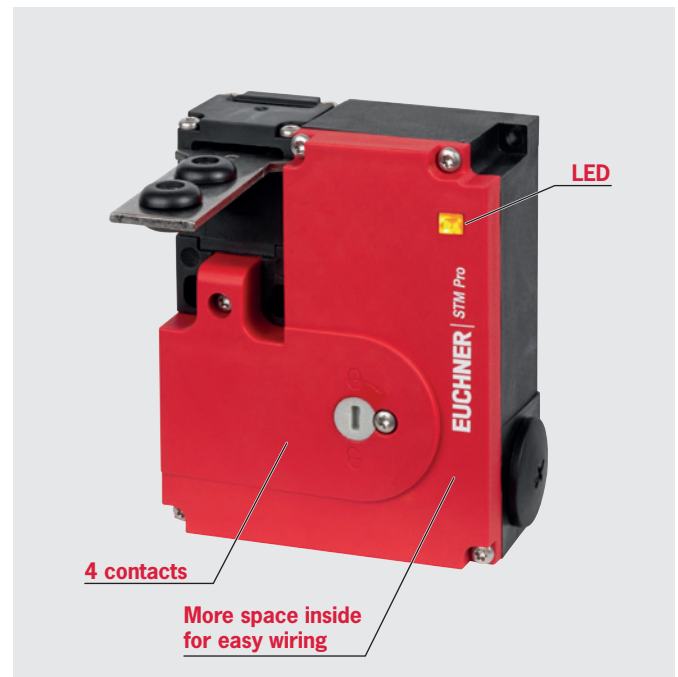


Versatile and compact – the new STM Pro

- ▶ Safety switch with guard locking for personnel and process protection
- ▶ With four contacts: two separate switching elements, each with two switching contacts, for the guard lock monitoring and the door monitoring



Due to its small design, the electromechanical safety switch STM Pro is suitable, in particular, for applications in which a guard locking function is required in combination with small installation dimensions. The adjustable actuating head with vertical and horizontal actuation opening offers a high degree of flexibility during mounting.

With the aid of the LED integrated into the housing, it is quickly apparent whether the guard locking solenoid is energized or not. The STM Pro makes available, via the four contacts, all the information necessary for the control unit. Wiring is particularly easy thanks to the enlarged connection space in the housing. A cable gland is included to attach and secure the connection cable.

Benefits for you

- ▶ Space-saving during installation due to compact design
- ▶ High degree of protection IP67
- ▶ Status indication with the aid of the integrated LED
- ▶ Easy wiring due to enlarged connection space
- ▶ Suitable for door radii of 200 mm or above
- ▶ High locking force of 1,000 N

Ordering table safety switches

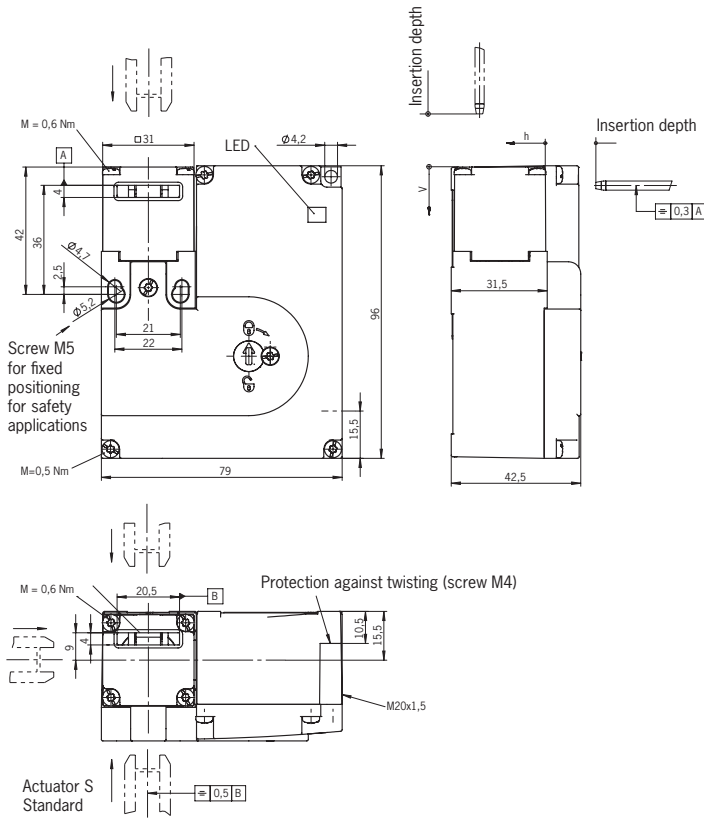
Item	Contacts		Locking type	Order No.
STM1N-2222B024-L01-M-172827	2222	Door monitoring contacts: 2 NC Guard lock monitoring: 2 NC	mechanical	172827
STM2N-2222B024-L01-M-172828			electrical	172828
STM1N-2422B024-L01-M-172829	2422	Door monitoring contacts: 1 NO + 1 NC Guard lock monitoring: 2 NC	mechanical	172829
STM2N-2422B024-L01-M-172830			electrical	172830

Ordering table actuators

Item	Description	Order No.
ACTUATOR S-GT-SN	Straight actuator, with rubber bush	095738
ACTUATOR S-G-SN-C2115	Straight actuator, without rubber bush	097861
ACTUATOR S-WQ-SN	Angled actuator, wide form, with rubber bush	095740
ACTUATOR S-W-SN-C2115	Angled actuator, slim form, without rubber bush	115073
HINGED ACTUATOR S-OU-SN	Hinged actuator, guard hinged at top or bottom	095315
HINGED ACTUATOR S-LR-SN	Hinged actuator, guard hinged on left or right	096838

Safety Switch STM Pro

Dimension drawing



Technical data

Parameter	Value	Unit	
Housing material	Reinforced thermoplastic		
Degree of protection	IP67		
Mechanical life	2 x 10 ⁶ Operating cycles		
Ambient temperature	-20 ... +55	°C	
Approach speed, max.	20	m/min	
Extraction force (not locked)	30	N	
Actuating force, max., at 20 °C	35	N	
Actuation frequency	1,200	/h	
Switching principle	Slow-action switching contact		
Connection	Cable entry M20 x 1.5		
Conductor cross-section (flexible/rigid)	0.34 ... 1.5	mm ²	
Utilization category acc. to EN IEC 60947-5-1	AC-15 4 A 24 V /DC-13 4 A 24 V		
Solenoid operating voltage/ solenoid power consumption	AC/DC 24 V (+10%/-15%) 6 W		
Duty cycle	100%		
Locking force STM.N	F _{max} 1,000 N	F _{Zh} 700 N	N
- ACTUATOR S-..., HINGED ACTUATOR S-...			